



Port Nikau

Modern Coastal Living
in a Master-Planned
Community



INNOVATION HOMES

Innovative Design, Smarter Building

THE HARBOURSIDE HOME

TURNKEY PACKAGE from \$837,000

Designed for the way you live.

**Artist Impression*



ENERGY EFFICIENT
DESIGN



SOLAR INCLUDED
STANDARD



10-YEAR HALO
RESIDENTIAL GUARANTEE



PRECISION BUILT
FOR QUALITY



BUILT BY LOCALS,
FOR LOCALS

www.innovationhomes.co.nz

A home that just feels right.

Designed for relaxed waterfront living, this home brings together clean architectural form, natural light, and a strong connection to the outdoors.

The raked ceiling lifts the main living space, creating openness and connection, while the layout has been carefully considered to balance privacy, functionality, and everyday ease.

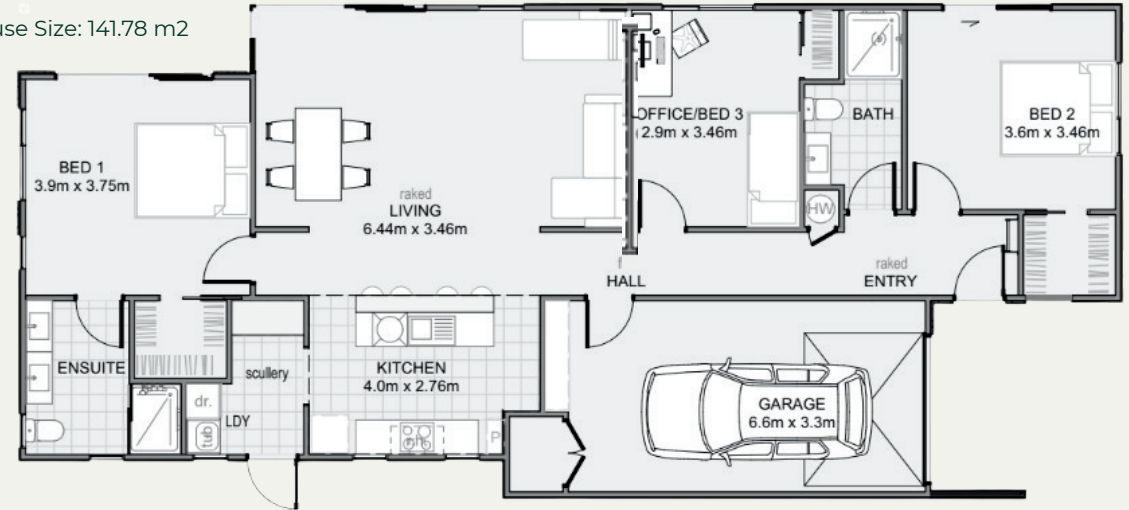
Built using Innovation Homes' precision-built system, it delivers a faster, more efficient build — without compromising on quality.



THE HARBOURSIDE HOME

19 Windward Ave, Port Nikau

Section Size: 273m² | House Size: 141.78 m²



HOME HIGHLIGHTS

- ✓ Light-filled open-plan living with raked ceilings
- ✓ Kitchen with scullery positioned for connection
- ✓ Private master suite with ensuite
- ✓ Flexible third bedroom or home office
- ✓ Seamless flow to outdoor living
- ✓ Internal access garage

WHY THIS HOME WORKS

This home has been designed to make everyday living feel effortless. The central living space opens up under a raked ceiling, creating height, light, and a natural sense of connection. Bedrooms are thoughtfully positioned for privacy, while the layout allows for flexibility as your lifestyle evolves. It's a home that feels just as good on a quiet morning as it does when entertaining friends.



LIFE AT PORT NIKAU

- ✓ Waterfront walkways and green spaces
- ✓ Minutes to Whangārei CBD, schools & cafés
- ✓ Easy access to Port Nikau Loop and marina
- ✓ A thoughtfully master-planned community
- ✓ Connected lifestyle, long-term value



Get in Touch

Nicole Hargood

☎ 0211678299

✉ nicole@innovationhomes.co.nz

Ready to make the move?

Turn-Key House & Land Package from \$837,000

Includes landscaping allowance, solar system, and fixed-price build.



**SOLAR INCLUDED
STANDARD**

